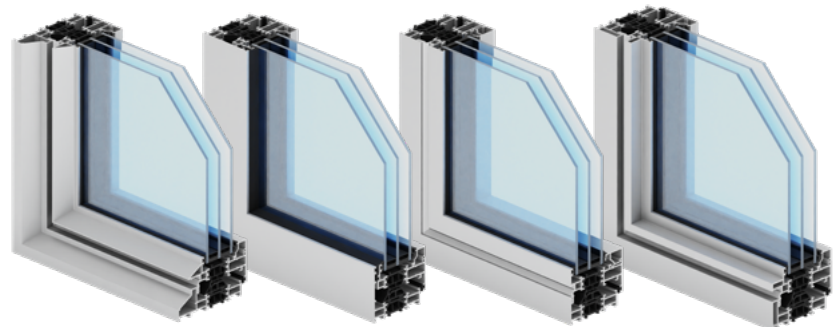




window and door systems



Steel

Invisible

Modern

Design

Max Light

- window and door system with thermal insulation, featuring a slim profile line ensuring maximum light access
- the specific shape of the profiles of the Max Light system (resembling steel profiles) gives the structure a modern industrial character
- system application: turn-only, fixed windows, openable windows: single-sash windows with the possibility of tilting, outswing type
- available system options: Max Light DESIGN, Max Light INVISIBLE, Max Light MODERN, Max Light STEEL
- Max Light is a group of systems distinguished on the market by its unique design, dedicated to modern architectural projects
- wide range of colours – RAL palette (Qualicoat 1518), textured colours, Aliplast Wood Colour Effect – wood-like colours, Aliplast Loft View – colours imitating stone surfaces (Qualideco PL-0001), anodised colour (Qualanod 1808), bi-colour

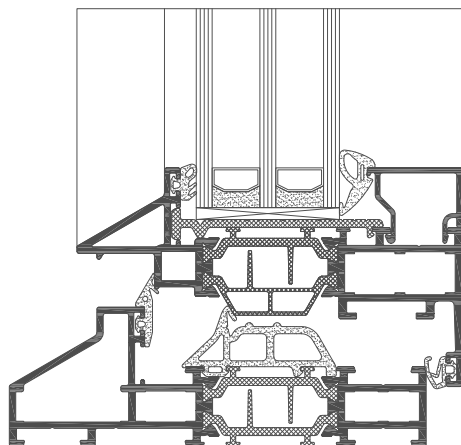


window and door systems

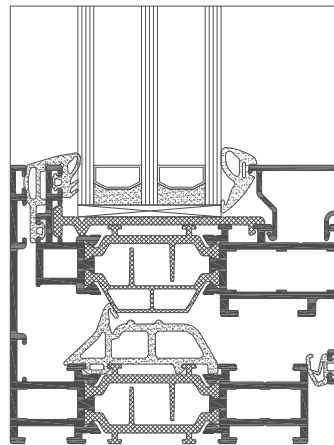
technical specification

system	thermal insulation Uf*	air permeability	windload resistance	watertightness
ML	Uf from 1.8 W/m ² K	Class 4; EN 12207	Class C5; EN 12210	Class E1650; EN 12208

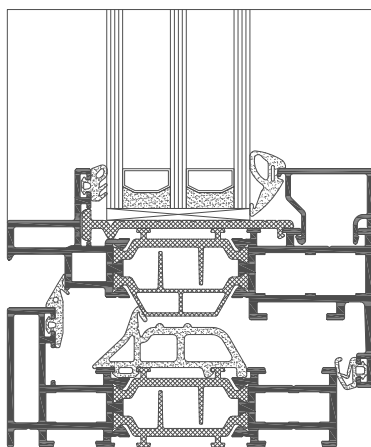
* Thermal insulation is dependent on a combination of profiles and thickness of the filling



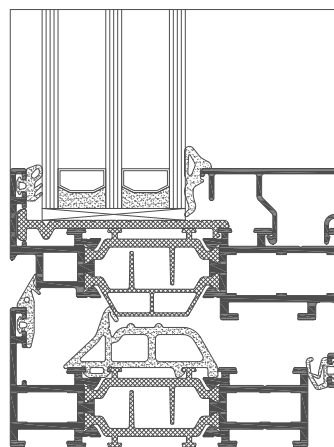
cross-section of the Max Light Steel system (ML820N + ML810)



cross-section of the Max Light Invisible system (ML920 + ML910)



cross-section of the Max Light Design system (ML620 + ML610)



cross-section of the Max Light Modern system (ML020 + ML010)