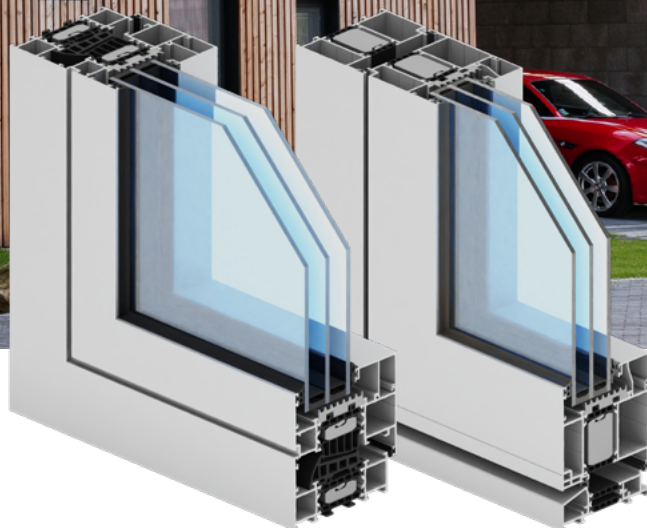




window and door systems



Star

- modern aluminium system for the design of windows and doors requiring very good thermal insulation
- thermal separator with a depth of 45 mm, made of solid and proven materials, is a reliable heat barrier
- the same type of insulating insert in the window sash and in the window frame ensures continuity of protection against heat loss of the entire structure
- new standard of glass profile overlap – increased depth improves the thermal and structural properties of the system
- possible hardware for the door with a roller hinge system with a very high load capacity
- innovative water drainage system from the structure (no visible elements blinding the drainage holes)
- the same type of corner and T-type connector in the external and internal compartment (reduction in the number of accessories and faster fabrication)
- reduced number of glazing beads and gaskets, while maintaining continuity of glazing, depending on the thickness of packages
- possible glazing from the outside
- possible profile bending (detailed specification of profiles and details of technical parameters of profile bending available in the authorised zone at www.aliplastpoland.com)
- system especially recommended for low-energy buildings and those undergoing thermal insulation improvement, as they increase thermal comfort also in standard facilities
- possible to install the Flyscreen and Insect System (mosquito net systems)
- wide range of colours – RAL palette (Qualicoat 1518), textured colours, Aliplast Wood Colour Effect – wood-like colours, Aliplast Loft View – colours imitating stone surfaces (Qualideco PL-0001), anodised colour (Qualanod 1808), bi-colour



window and door systems

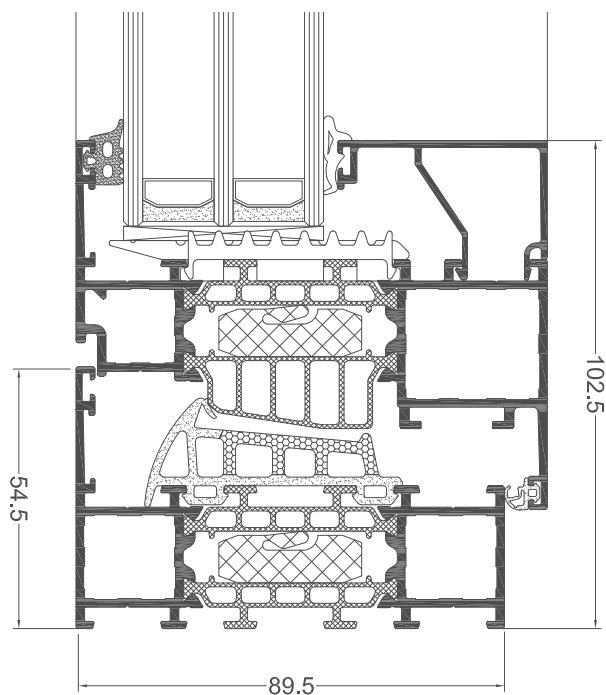
technical specification

system	material	depth of frame	depth of sash	glazing range	type of windows	door type	acoustics
GT window	aluminium / thermal insulation	90 mm	99 mm	fix 14 to 72 mm / 23 to 81 mm	walls, fixed, turn-and-tilt windows	—	48 (-2,-5) dB
GT door	aluminium / thermal insulation	90 mm	99 mm	14 to 72 mm	—	single, double type of the outswing, inswing type	45 (-1,-3) dB

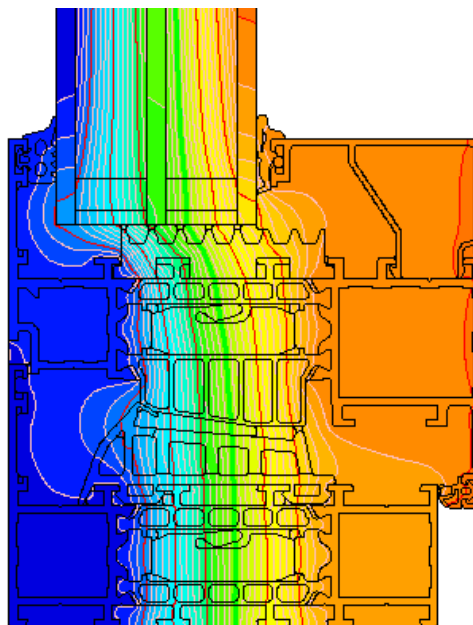
performance

system	thermal insulation Uf*	air permeability	windload resistance	watertightness
GT window	Uf from 0.73 W/m ² K	Class 4; EN 12207	Class C5/B5; EN 12210	Class E900; EN 12208
GT door	Uf from 1.21 W/m ² K	Class 4; EN 12207	Class C5/B5; EN 12210	Class E1350; EN 12208

* Thermal insulation is dependent on a combination of profiles and thickness of the filling



cross-section of the Star window (GT010 + GT020)



example isotherm arrangement for the frame and window sash assembly of the Star system (GT010 + GT020)